

Like 0

Tweet 0

Share

Your Update from ITS Heartland

December 2013



## It's Time to Renew!

If you haven't already, please take a moment and renew your annual ITS Heartland membership for 2014. We've made it easy - simply click on the link below, review the membership types available and select Membership Registration. Your new membership year will begin immediately and will expire on December 31, 2014.

As a member, you will receive a reduced rate for our annual meeting (held in conjunction with the 2014 National Rural ITS Conference), a one-year subscription to *ITS Heartland Pulse*, exclusive access to ITS training, many networking opportunities with other professionals in the ITS industry, and essential information on the newest products and services provided by industry leaders.

[Renew my membership!](#)

Membership questions can be directed to Mandy Anderson at [manderson@gbateam.com](mailto:manderson@gbateam.com) or 913/577-8464.

We look forward to your involvement in 2014!

## Call for Abstracts -- 2014 National Rural ITS Conference

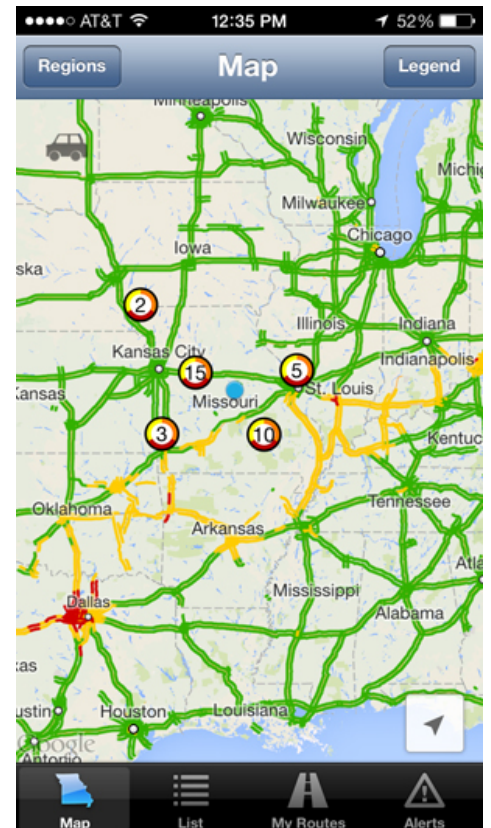
The 2014 NRITS Conference Planning Committee invites you to submit an abstract for presentation at the August 24 - 27 conference in Branson. In an attempt to make this conference more "results oriented," particular consideration will be given to those that document benefits of existing deployments. If you have a project or documentation that focuses on deployment results, please consider sharing it with the NRITS audience.

Abstract topics areas include asset management, ATIS (traveler information), city & county rural ITS, connected vehicles, emergency response, ITS funding, ITS leadership, ITS performance measures, succes stories of multi-agency coloboration, multimodal, operations & maintenance, rural ITS safety measures, rural traffic management, traffic incident management, traffic operations, transit application, and work zone ITS. Topics outside of these areas will also be considered.

All abstracts must be received by **Friday, February 7, 2014** and can be submitted through an online form at <http://fs18.formsite.com/MeetingsNorthwest/form8/index.html>. Email submissions to [info@nritsconference.org](mailto:info@nritsconference.org) must include abstract title, lead and supporting author contact information, topic area and a 750-word maximum abstract text. Questions can be directed to Meetings Northwest at 866/633-8110.

## State Updates

### Missouri



MoDot's recently upgraded mobile app can be used to view real-time speeds. The effects of a recent winter storm are obvious in this screenshot.



▶ MoDOT recently upgraded its statewide traveler information mobile app. The upgrade includes several significant changes including the addition of real-time traffic speeds, the clustering of icons to reduce clutter, and a new "My Routes" feature that allows users to obtain information on specified routes of preference. The updated app is available in both the Apple and Android formats.

▶ MoDOT is in the process of procuring a new source of traffic probe data to support multiple efforts. The new data source will help MoDOT provide customers with real-time traffic information, like travel times, in new locations across the state. The data will also serve as a valuable resource for performance management and planning purposes. MoDOT expects to be utilizing the data by Spring 2014.

**Kansas**

▶ WICHway, KDOT's ITS on Wichita's highways, has a new website, [www.WICHway.org](http://www.WICHway.org). It offers the usual camera views and tours, traffic speeds, DMS messages, winter road conditions, maintenance & construction activities PLUS it's a smartphone-ready website!

**Oklahoma**

▶ ODOT will be expanding its vehicle detection deployments in the Tulsa region with additional coverage on 95 miles. A second project will add 43 more CCTV sites in Tulsa.

▶ Various RFPs will go out for ITS support, DMS, CCTV, detectors, RWIS and fiber optic routes. Recently completed RFPs included equipment & materials and on-call service for engineering & inspection.

▶ ODOT is looking to install generators at all DMS sites. In the past, tornadoes that ripped through Oklahoma left 1/3 of the state's DMS without power.

▶ ODOT finished a \$74 million, 1,050-mile fiber optic construction project and statewide network and is currently closing out a Broadband Technologies Opportunity Program (BTOP) grant.

**Nebraska**

▶ NDOR is in the initial stage of planning a statewide operations center in Lincoln.

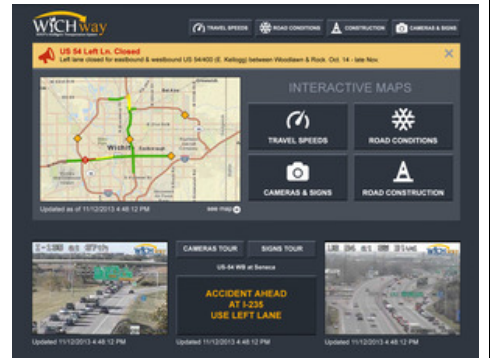
▶ Interviews of traffic data providers took place on December 20.

▶ The first stakeholder committee meeting for the ITS Strategic Plan was scheduled for January 7. Contact Sarah Tracy if you have a strong interest in NDOR's ITS program.

▶ ITS projects to be deployed in 2014 include cameras, anti-icing systems and rest area kiosks.



The deadline is near (January 15) to submit a scientific or technical paper or a special interest session for the 2014 ITS World Congress. Access the info for the September conference at [www.itsworldcongress.org](http://www.itsworldcongress.org).



WICHway's new website adjusts to the user's electronic device. This is the desktop version.

Contact the ITS Heartland Board President at [sarah.tracy@nebraska.gov](mailto:sarah.tracy@nebraska.gov)  
Contact the Pulse editor at [hein@ksdot.org](mailto:hein@ksdot.org)  
Visit the ITS Heartland website at [www.itsheartland.org](http://www.itsheartland.org)

---

[Click to view this email in a browser](#)

If you no longer wish to receive these emails, please reply to this message with "Unsubscribe" in the subject line or simply click on the following link [Unsubscribe](#)

---

ITS Heartland  
714 N. Main  
Wichita, Kansas 67203  
US

[Read](#) the VerticalResponse marketing policy.

