



TSMO Update

ITS Heartland, Des Moines



Tim Simodynes
State Traffic Operations Engr.

May 1, 2024

Active Transportation & Demand Management Sample Strategies



Ramp Metering



Dynamic Shoulder Lanes



Transit Signal Priority



Adaptive Traffic Signal Control



Active Parking Management



Dynamic Speed Advisories

TSMO Service Layer Plans

Intelligent Transportation Systems & Communications

Update to **ICE-Ops Data Set**

- 10 Operations-related data layers

Statewide scoring tool

- Dynamic Message Sign (DMS) needs

- AADT
- Bottlenecks
- Incidents
- Crashes/Potential for Crash Reduction (PCR)
- Buffer Time Index
- Event Center Proximity
- Flood Events
- Winter Weather
- Freight Impacts (PCR)
- Infrastructure Condition

TSMO Service Layer Plans

Dawn Williams

Traffic Incident Management (TIM)

Update service layer plan

Statewide TIM Committee

TIM Plan Updates

Temporary TIM Plans

TIM Training



Work Zone Task Forces

WZ Speed Management

- Design speeds, workers present speed limits

Emergency Pull-off Guidance and Design

Long-Term Temporary Rumble Strips

- Multi-month, high-speed uses

Maintenance of Traffic on Rural 2-Lane Bridge Projects

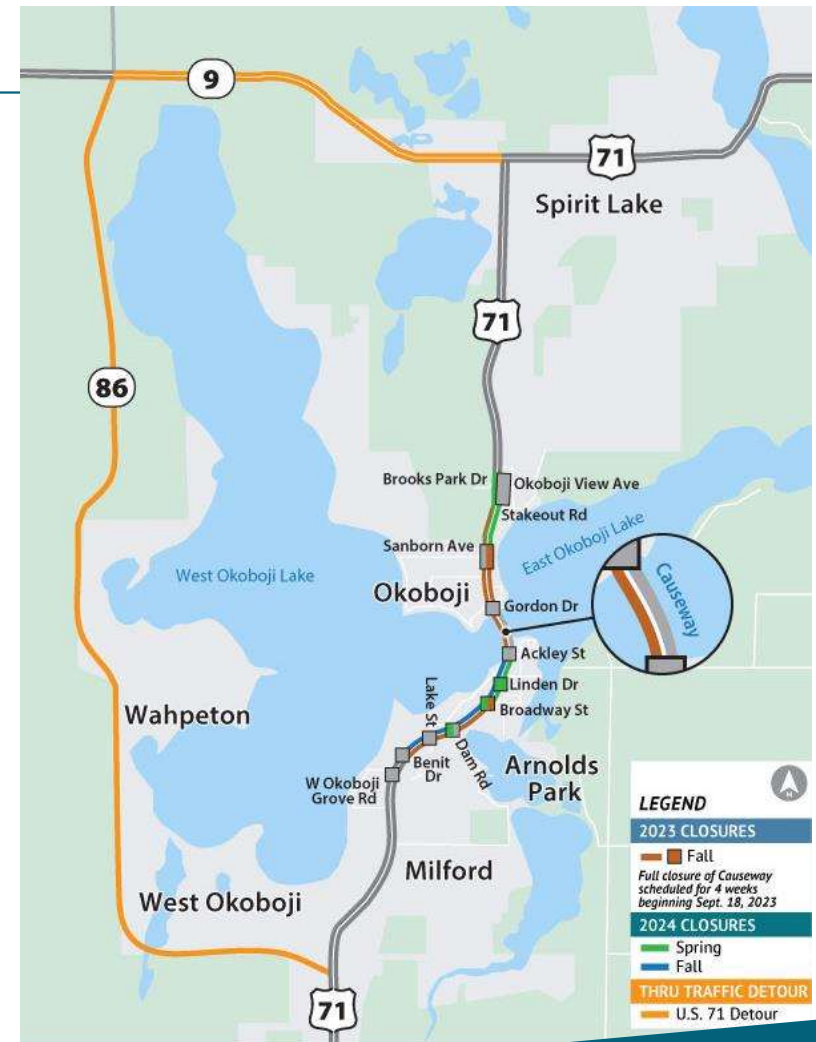
- Detour, accelerated bridge construction, other?

“Optional” Detour

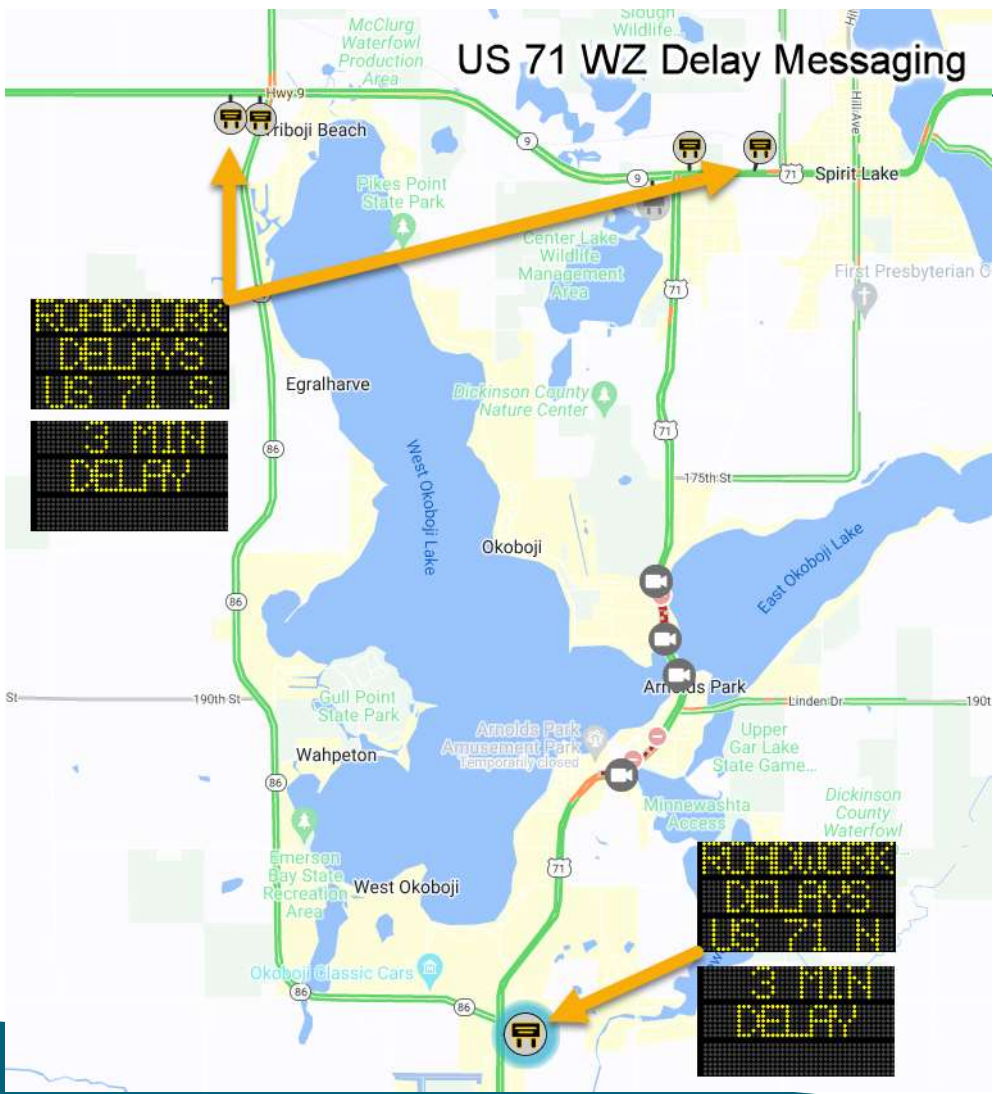
How do you get drivers to take an **Optional** detour?

- Travel times might discourage detour use

Intelligent Work Zone
US 71 in Okoboji



US 71 WZ Delay Messaging



Delay Messaging

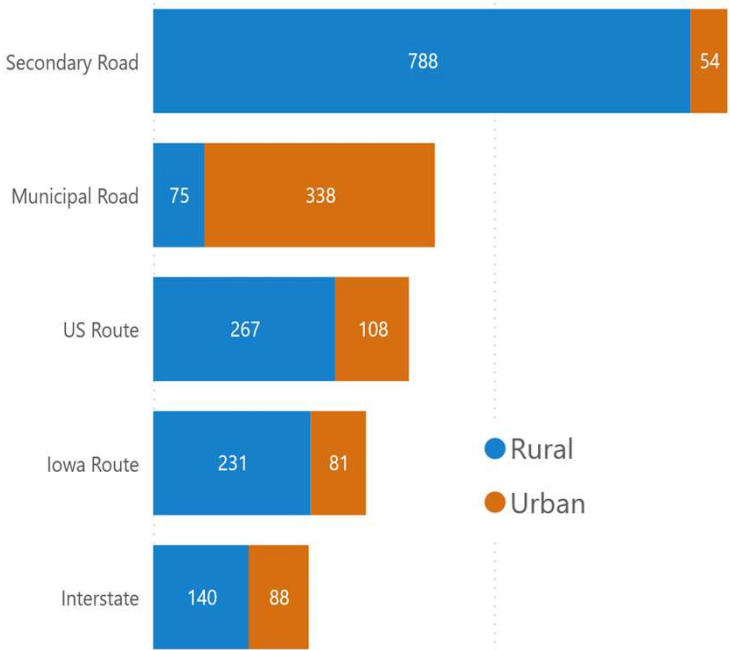
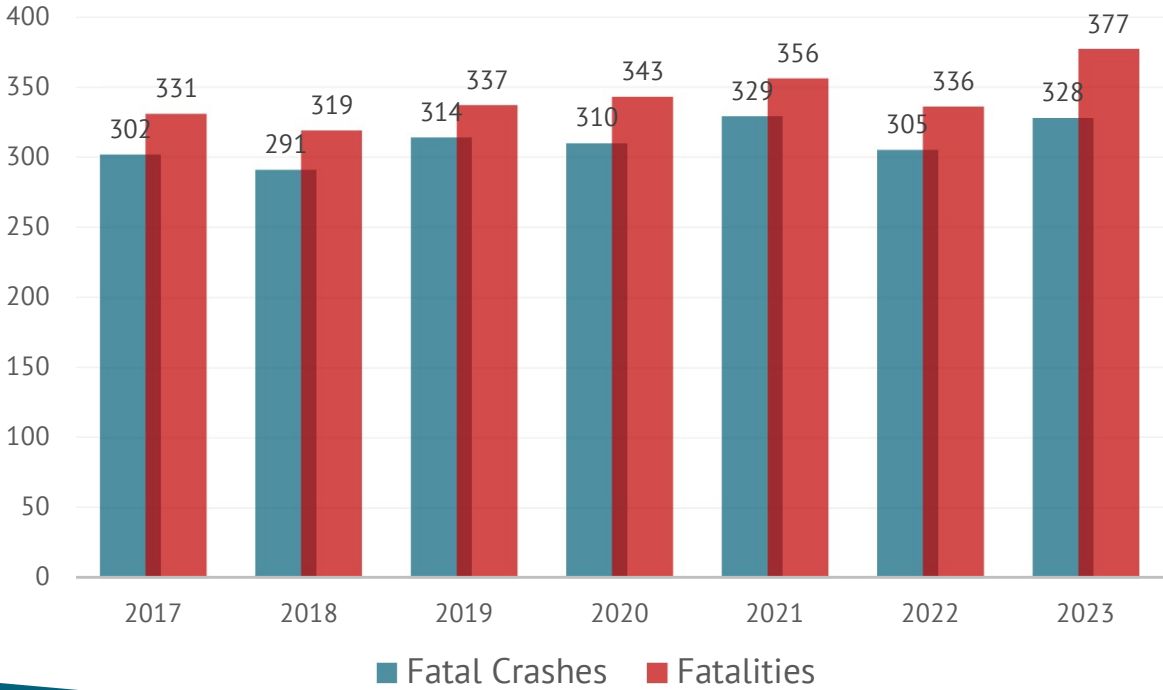
- Delay is nearly always present due to the construction restrictions
- Probe data used to provide real-time updates

(No sensors needed!)

Intelligent Work Zone
US 71 in Okoboji

Safety Emphasis

Fatal Crashes and Fatalities in Iowa



InTrans Analytics Tools



Dashboards and Tools for

- TMC Incidents
- Crashes
- Congestion
- Weather
- Work Zones
- Etc.

IOWA DOT [OPEN DATA](#)

INSTITUTE FOR TRANSPORTATION AT IOWA STATE UNIVERSITY OPERATIONS & SAFETY DASHBOARDS

Below is a list of dashboards that have been developed at the Iowa State University - Institute for Transportation to support traffic operations and traffic safety research at the Iowa DOT. This page includes links to internal (available for DOT staff only) and external (publicly available) dashboards that can be used for data analysis.

[See Dashboards](#)



GENERAL DASHBOARDS

- ✓ [Emergency Incident Notification \(EIN\)](#)
Real-time dashboard of current and



TSMO in Project Development /Delivery

Project Dev. Division

8+ Prioritized Efforts, including:

- ▶ Consider Operations in Planning Studies
- ▶ Maintenance of Traffic on rural 2-lane bridge projects
- ▶ Paved Shoulder Standards
- ▶ Pave Median Crossovers in the Fall
- ▶ District Work Zone Traffic Operations Tracking
- ▶ Traffic Operations Manual (TOM) Integration

Miscellaneous TSMO

Lane Closures – Towing & Recovery

TSMO & Planning

- High-Growth, Urban Fringe, Expressway Corridors
- MPO Plans

Training

- Traffic Operations Manual
- Operations Academy

Truck Parking Information Management System (TPIMS)



Questions?

Tim Simodynes

State Traffic Operations Engineer

Traffic Operations Bureau

Tim.Simodynes@iowadot.us, 515-239-1606

iowadot.gov/TSMO