

ILLINOIS TOLLWAY



Scott Lee – Chief Engineer of Innovation and Technology - TranSmart
Steven Mednis – General Manager of Traffic and Incident Management- ISTHA
Bini William – Project Manager - Parsons

April 26th, 2022
ITS Heartland Annual Meeting



TRAFFIC OPERATIONS CENTER



Monitors 294-mile Illinois Tollway system in Northern Illinois

First in the nation to integrate two-way computer-aided dispatch in 2002



Manages more than 650 traffic events a day

Ongoing commitment to integrate incident management from policy to staffing to systems

INTELLIGENT TRANSPORTATION SYSTEMS

- More than 80 DMS and PCMS
- I-90 SmartRoad with active traffic management
- Nearly 1,500 CCTV cameras
- Nearly 500 sensors
- 21 RWIS stations
- Full CAD integration with Illinois State Police

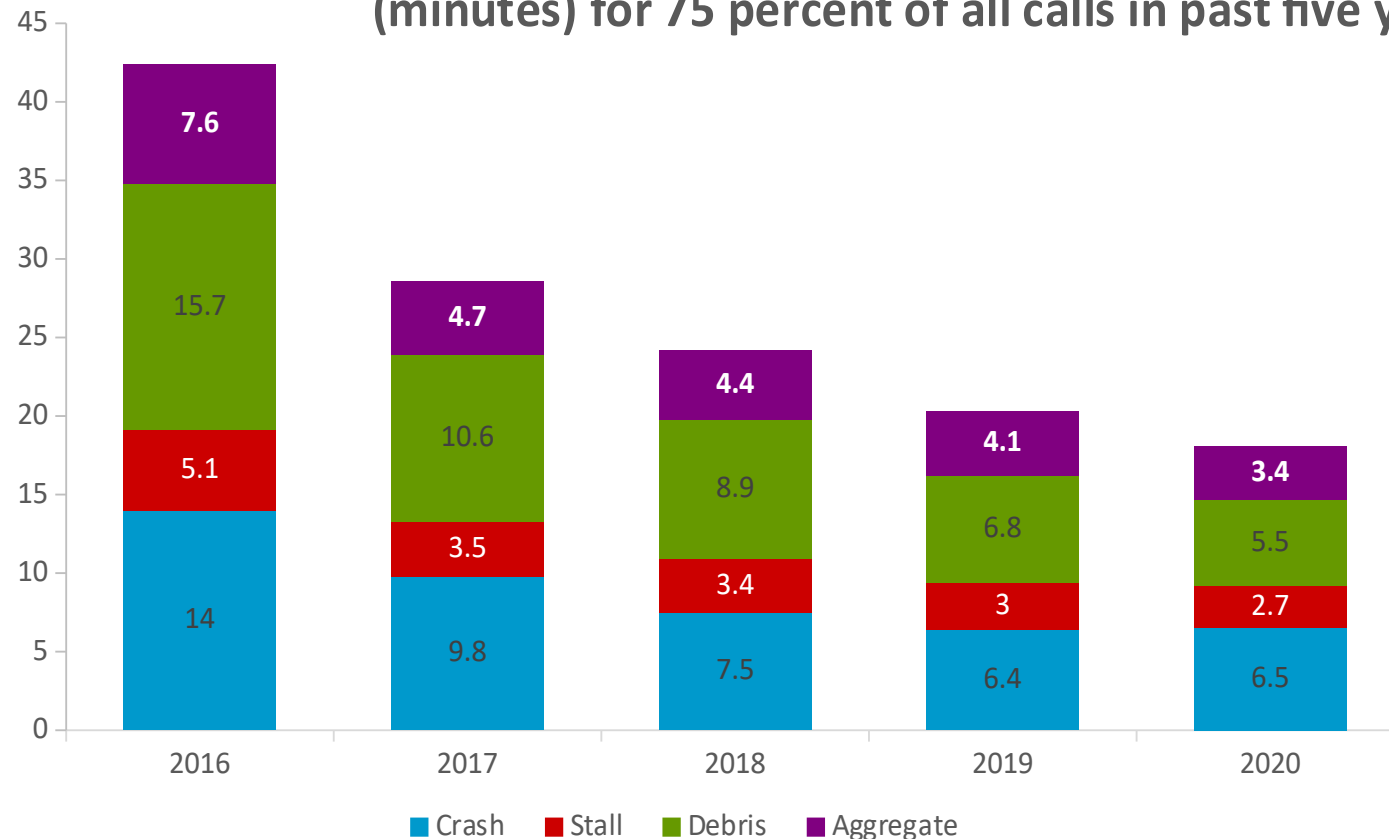


HISTORY OF PERFORMANCE

Every moment counts

- Detection
- Verification
- Response assets
- Response procedures
- Clearance

Illinois Tollway has reduced confirmation times (minutes) for 75 percent of all calls in past five years



TYPES OF EVENTS

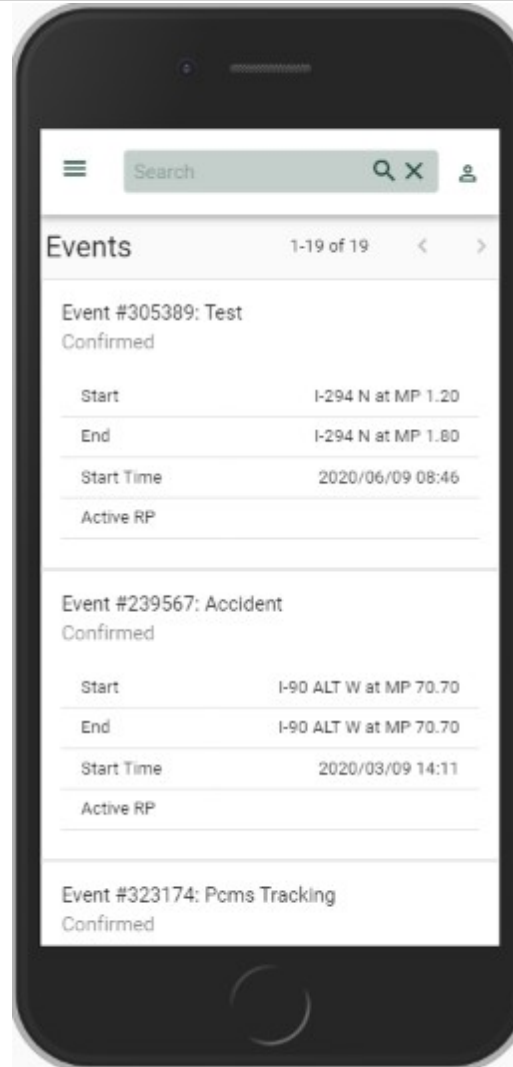
In 2020, the Illinois Tollway responded to



TIMS2GO MOBILE INCIDENT RESPONSE APP

Puts TOC resources in traffic managers hands

- Anytime, anywhere access
- Direct appropriate resources
- Real-time operational condition assessment and response
- Live incident video access to Illinois State Police District 15



Vision:

Manage similar situations in the future with advanced technology capabilities

TIMS2GO VIDEO



INVESTING IN REMOTE ACCESS

Envisioned remote web-based TIMS app that provides TOC access to broader stakeholders

- Incident management
- Traffic operations
- Illinois State Police District 15
- Roadway maintenance
- Administrative staff

Situational awareness for leadership

Improved access to common ITS and TOC questions

The screenshot displays the TIMS2GO web application interface. At the top left is the TIMS2GO logo. A search bar is located at the top right. Below the search bar, the text "G12E;G13W WB W of Arlington Heights: Live Video" and "I-90 (Tollway) W | MP 70.60" is visible. The main content area shows a live video feed of a multi-lane highway with traffic. In the bottom right corner of the video, the text "WB-W-of-Arlington-Heights" and "2021-10-05 07:40:09" is displayed. On the left side, there is a dark sidebar menu with the following items: Map, Events, Roadwork, Devices (with a dropdown arrow), AVL (with a dropdown arrow), CCTV (with a dropdown arrow), DMS, RWIS, Statistics (with a dropdown arrow), AVL (with a dropdown arrow), CCTV (with a dropdown arrow), DMS (with a dropdown arrow), Manufacturer Type, Config State, RWIS (with a dropdown arrow), Vendor Type, Config State, and Reports (with a dropdown arrow).

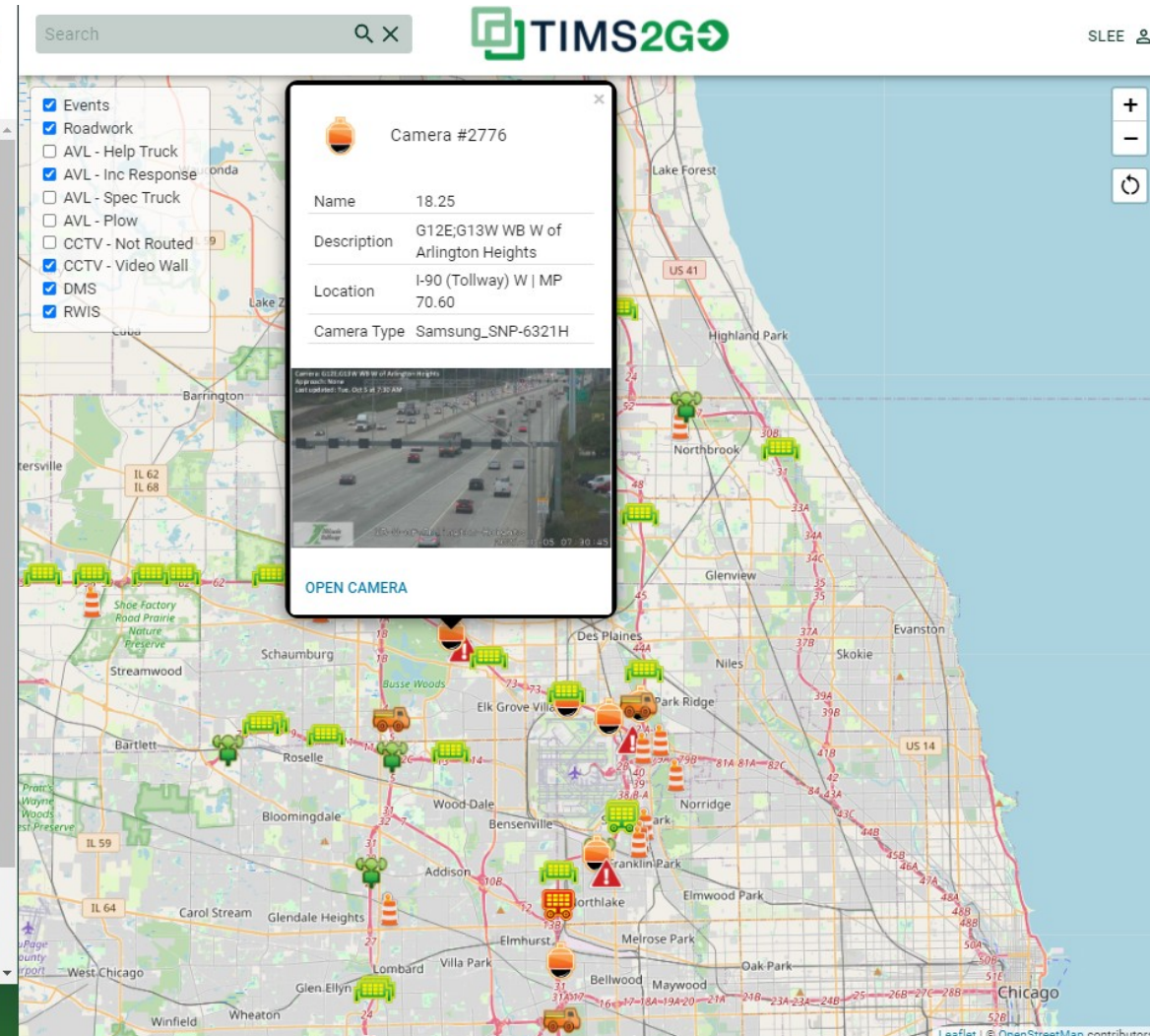
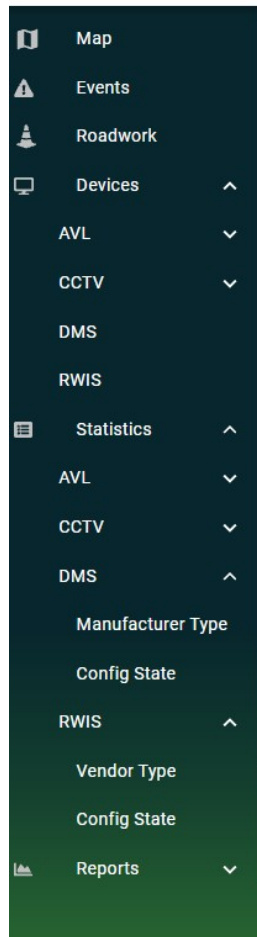
FUNCTIONS AND DESIGN ELEMENTS

Functions

- Streaming CCTV to any device
- Event status
- ITS device status
- Reporting and metrics

Design elements

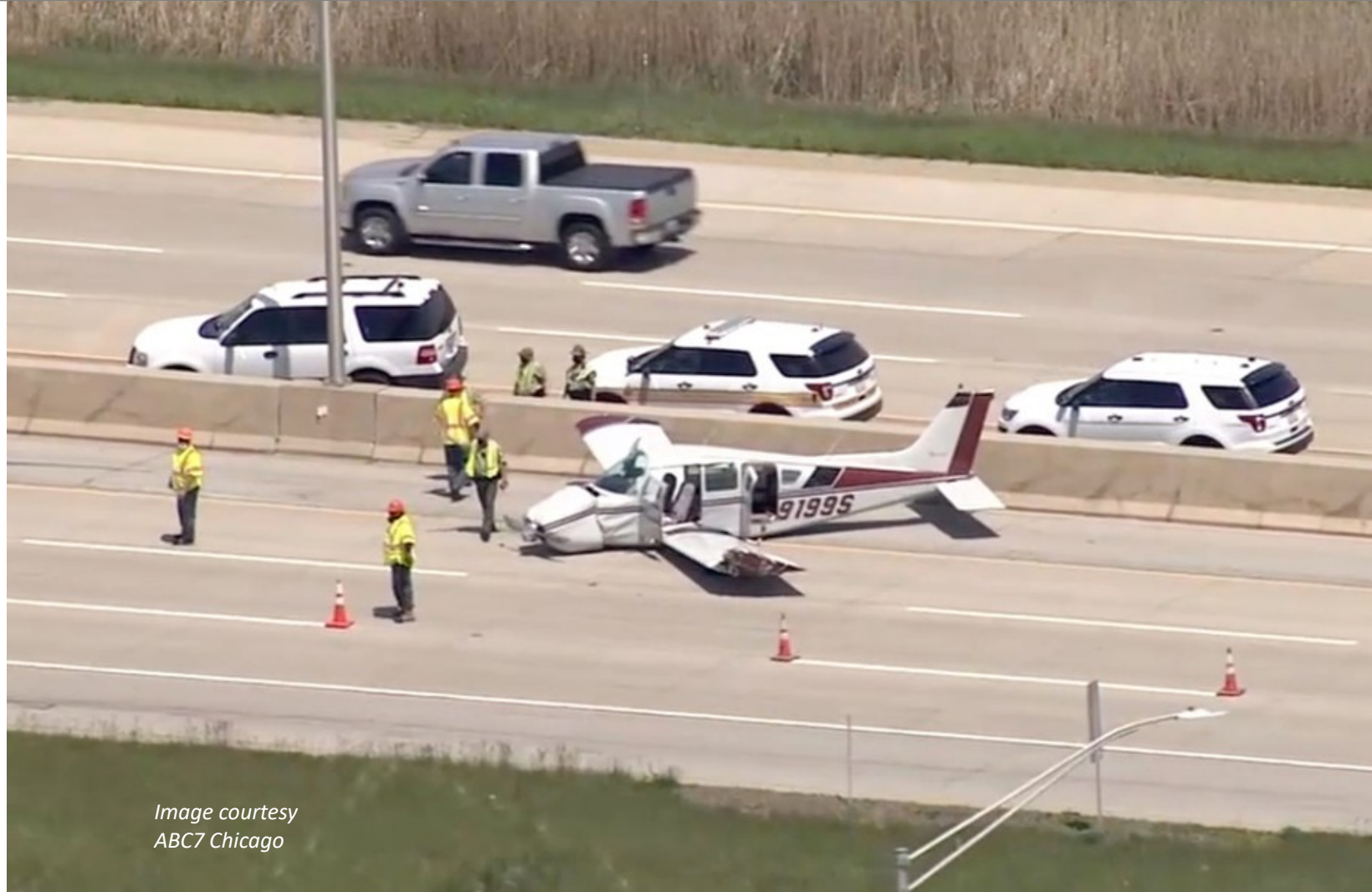
- Limit keystrokes
- Ensure legibility, viewability and usability
- Map and list-based selections
- Support Apple and Android
- Support multiple browsers



OUTCOMES

Successful release

- Handling airplane landing incident
- Monitoring incident from remote locations
- Service of all levels of operations
- Potential sharing with additional response partners



*Image courtesy
ABC7 Chicago*

DEMONSTRATION



Username

Password



CONTACT

Steven Mednis

*General Manager of Traffic
and Incident Management*



Office (630) 241-6800 x4904
Cell (630) 201-6209
smednis@getipass.com

Scott Lee, P.E.

*Chief Engineer – Innovation
and Technology*



Cell (872) 315-6005
slee@transmartinc.com

Bini William, PMP

Project Manager



Cell (847) 962-1553
Bini.William@parsons.com

