

HOW KANDRIVE IS TRANSFORMING US 83 TRAVEL



castle
rock.

ITS HEARTLAND 2025

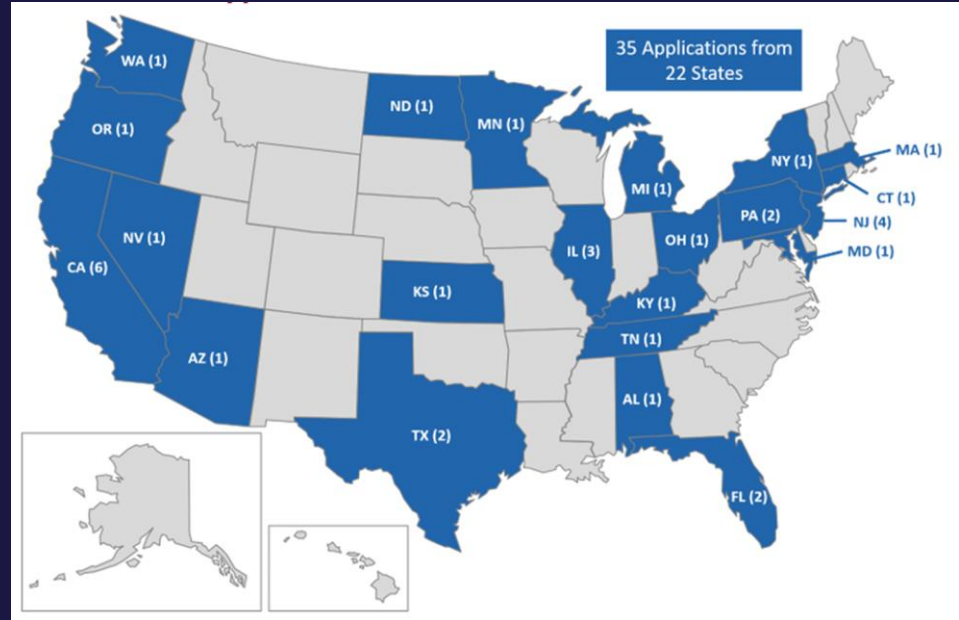
OVERLAND PARK, KS

APRIL 30, 2025

Project Overview

Great Plains Rural Freight Technology Corridor Project Grant

- September 2022, KDOT Awarded a \$7 Million Grant by USDOT
- Advanced Transportation and Congestion Management Technologies Deployment (ATCMTD) Grant
- Fixing America's Surface Transportation (FAST) Act funding

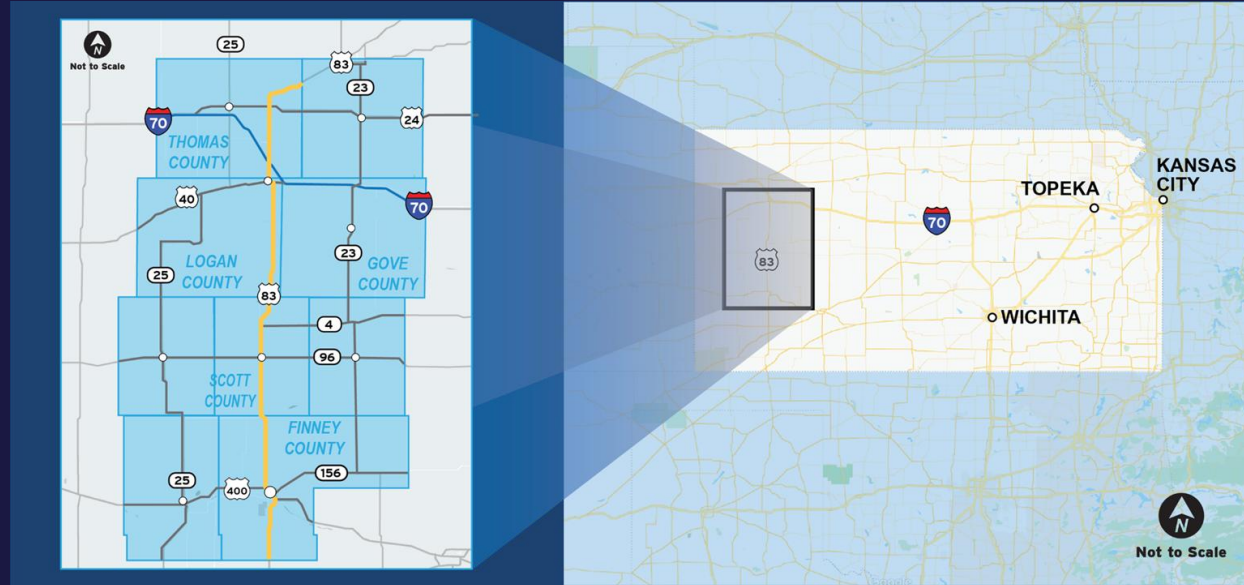


Out of 35 applications, 10 were selected

Project Overview

US 83 Project Corridor

- Thomas
- Logan
- Gove
- Scott
- Finney

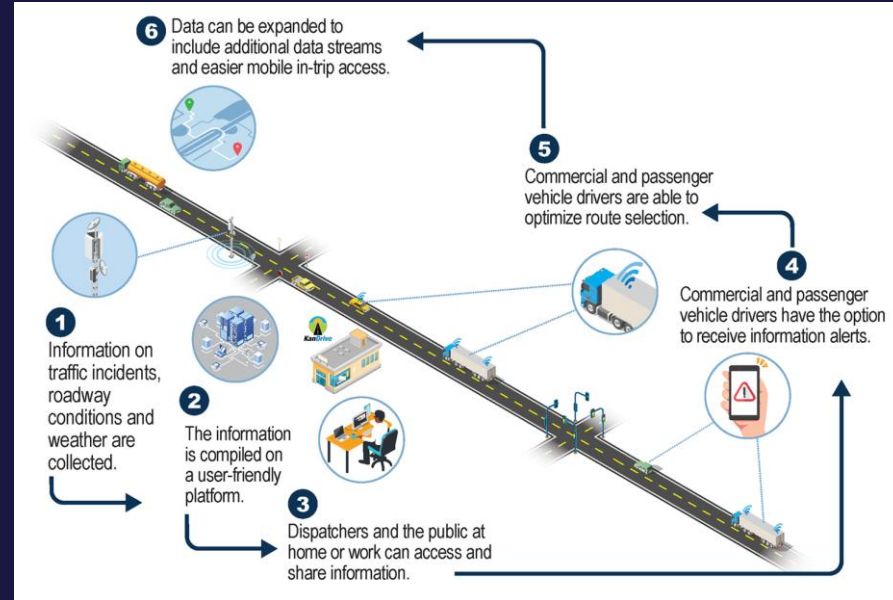


System Goal

Enable users to optimize time critical routing and arrival/departure, improving safety and productivity while reducing shipping costs and delays.

System Users

- Agriculture Shippers
- Energy Industry
- Manufacturers
- Distributors
- Vehicle Drivers



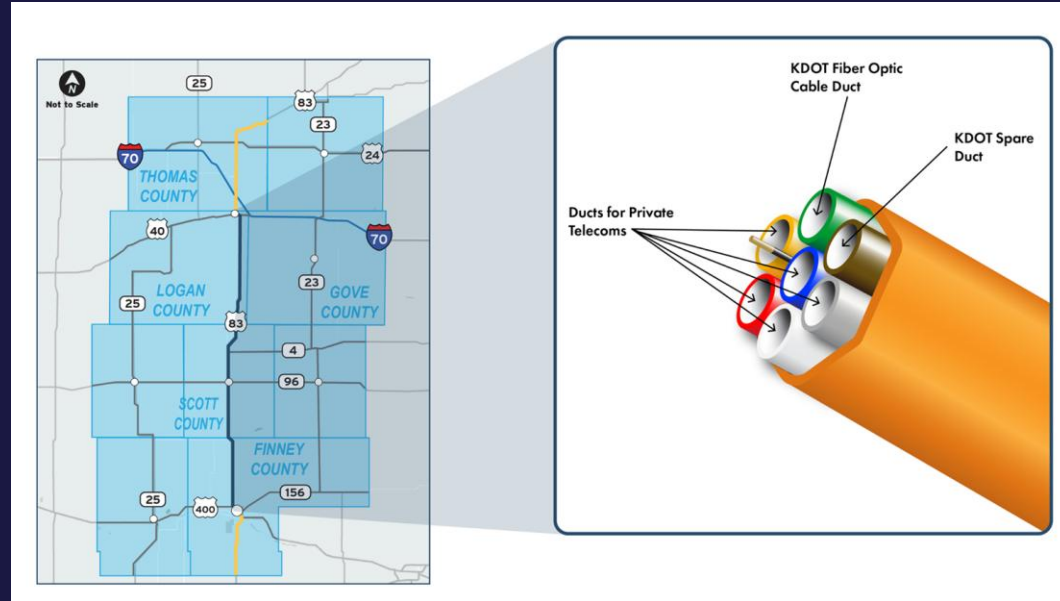
Proposed System

Phase 1	Phase 2
Install Fiber Optic Cable Along US 83 Between Garden City and I-70.	Install and Deploy Advanced Intelligent Transportation System (ITS) Technologies Including Connected Vehicle (CV) Technology Along the Corridor and Enhance Software.

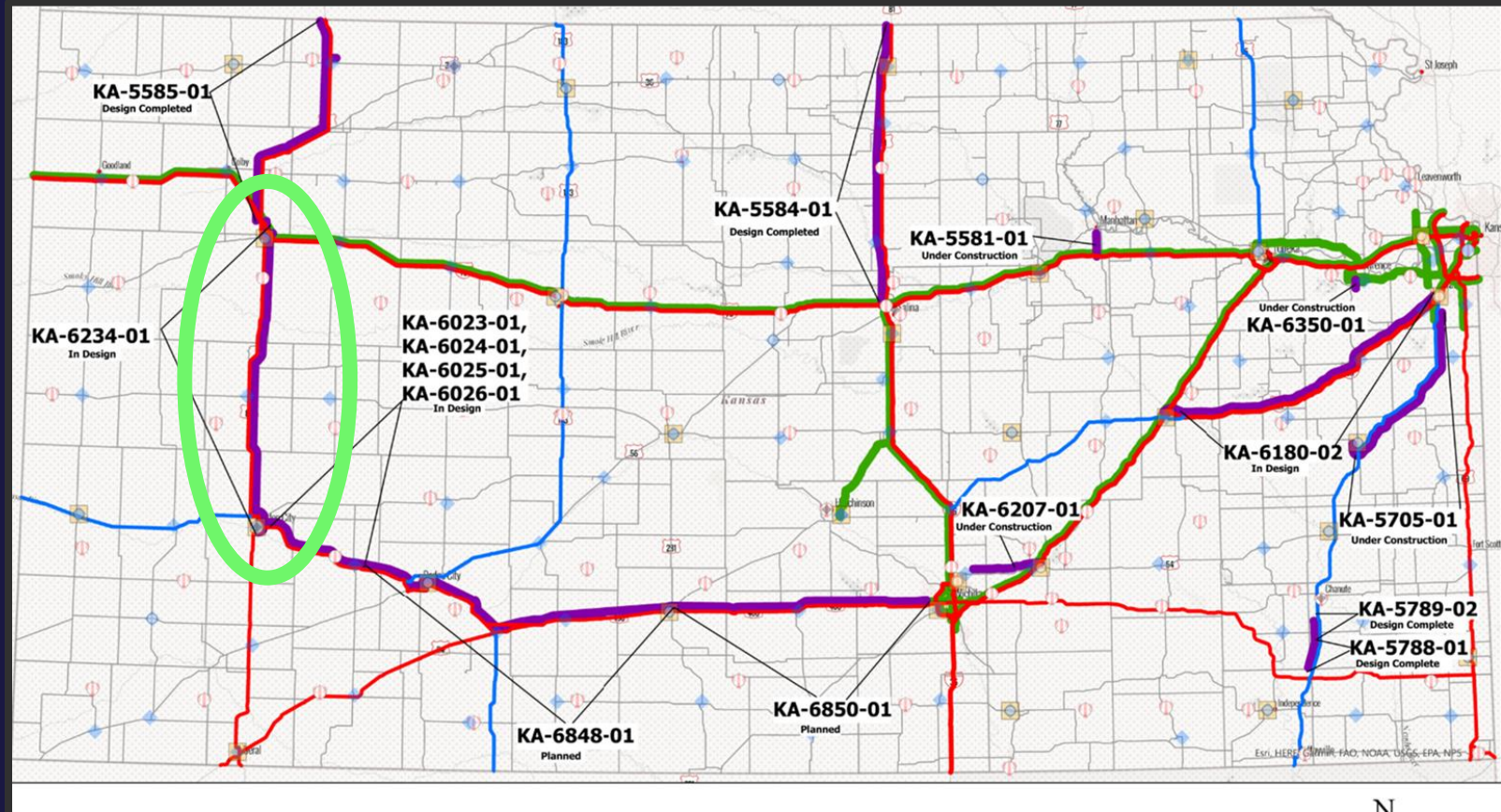
Phase 1 - Project Fiber Deployment

Seven-Way Duct and Fiber Backbone

- KDOT Network Connection Points
 - Three Offices
 - Two RWISs
 - Two Signs
 - Two Cameras
 - Two Radio Towers
- Incentivize Broadband Expansion
- Construction Nearly Complete

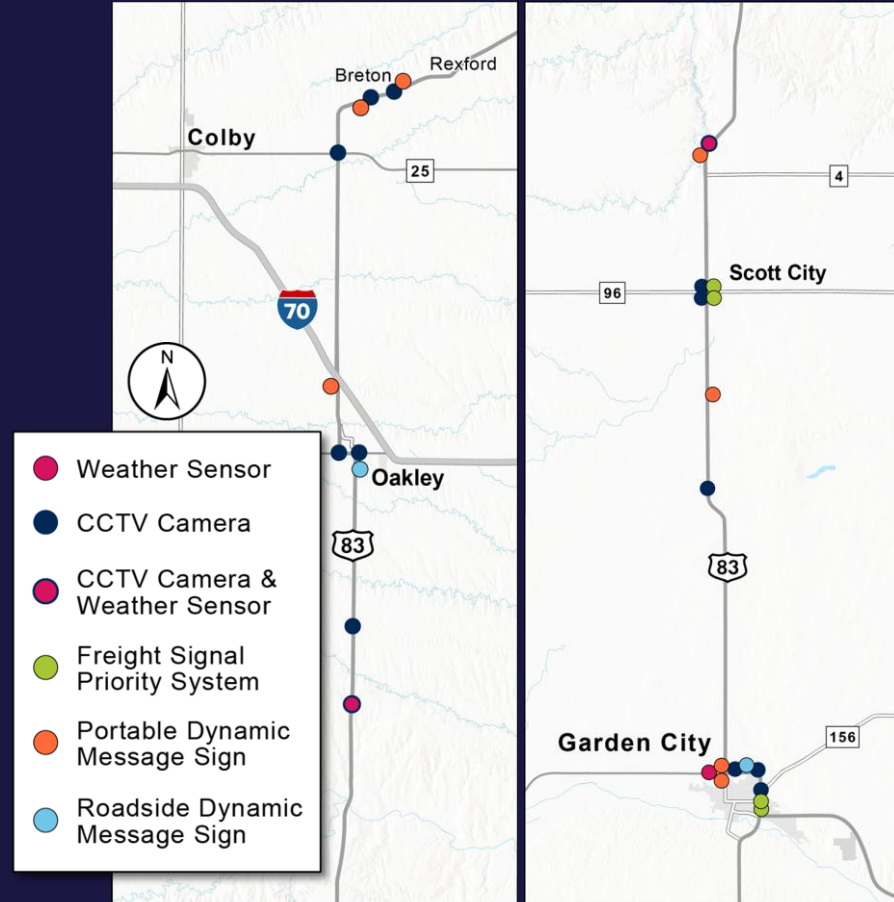


Statewide Fiber & Multi Duct



Phase 2 - Proposed System

- Software Enhancements
 - KanDrive
 - KaITS
- Roadside Hardware
 - Freight Signal Priority
 - Enhanced Roadway Weather Information Systems
 - Roadside Dynamic Message Signs
 - CCTV Cameras
 - Cameras with Video Analytics to Monitor Spot Congestion





Our mission

helping transportation agencies
capture and share
human-centered
roadway knowledge

KanDrive

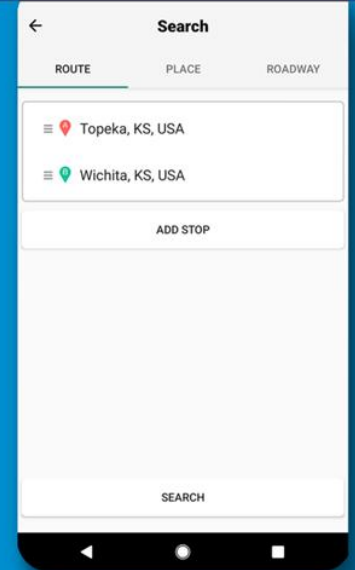
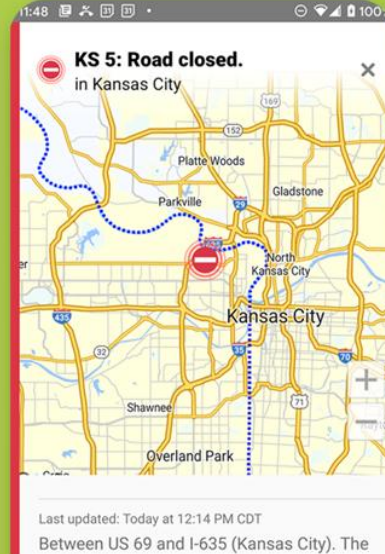


KanDrive

One-stop resource to see
statewide traffic and
commercial vehicle
information.

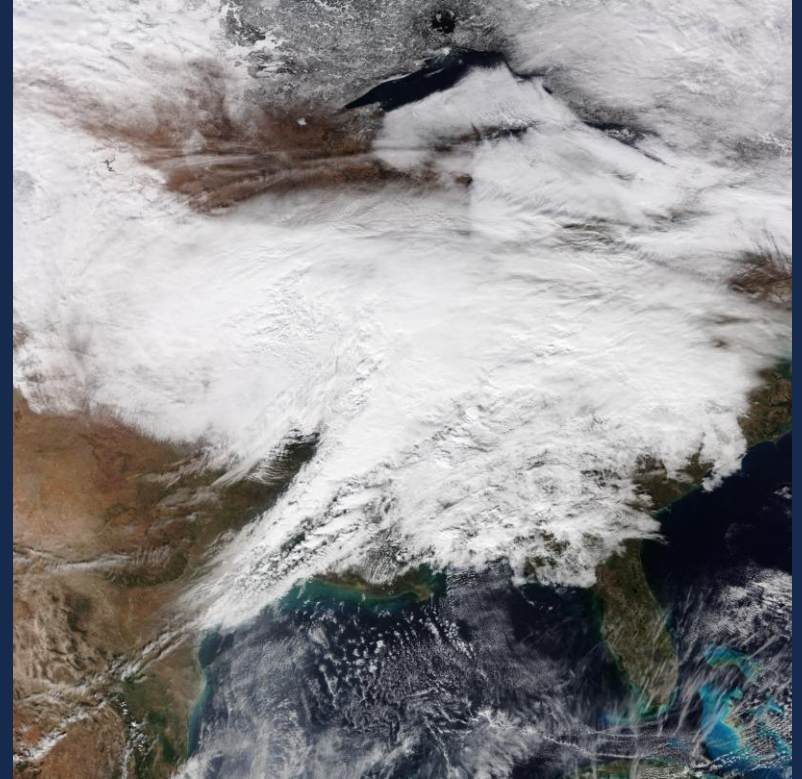
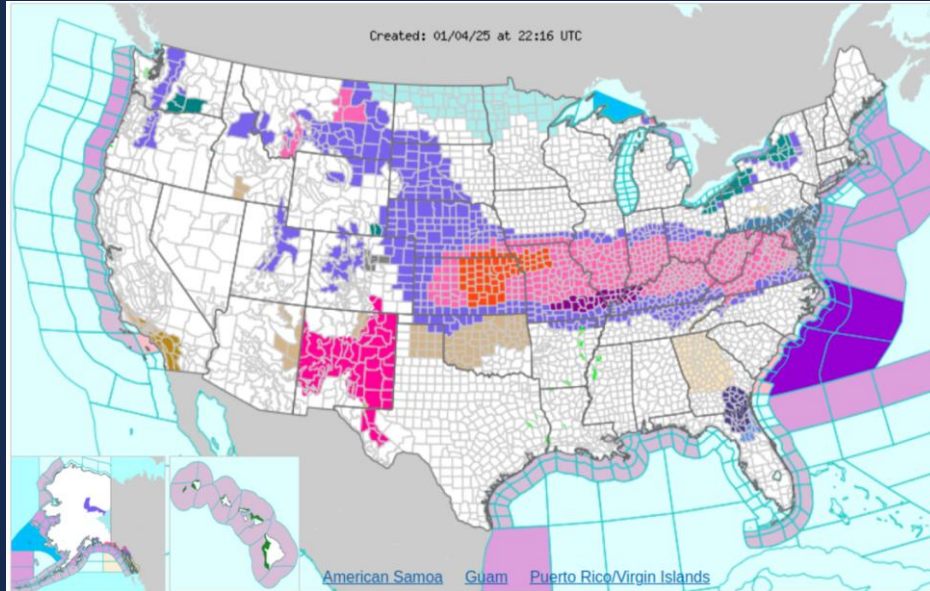


Get details about road
closures, detours, traffic
impacts, road conditions
and more statewide.




Use the new trip planner
tool to help map your
route.

Jan 4-6 Winter Storm



KanDrive Website



Search for a place

Statewide

WICHway

KC Metro

What Are You Looking For?

Incidents

Cameras

Winter Driving

Construction

My KanDrive

I-70

KTA

US 400

US 83

US 75

More

Critical Information

EB I-70 Closed

US 36: Road closed.

Updated Today at 1:00 PM CST

between Belleville and 8 miles east of the Cuba area

KS 148: Road closed.

Updated Today at 1:00 PM CST

between 6 miles east of Norway and 20 miles east of the Agenda area

KS 148: Road closed.

Updated Today at 1:02 PM CST

between 15 miles west of the Norway area and 6 miles east of Norway

US 81: Road closed.

Updated Today at 1:29 PM CST

between 18 miles south of the Minneapolis area and 12 miles south of the Concordia area

US 36: Road closed.

Updated Today at 1:02 PM CST

between 11 miles east of the Smith Center

EB I-70 Closed

Map Satellite

Layers Legend

Select: Default / None

☒ Incidents

☒ Construction

☐ Planned Construction

☒ Traffic Speeds

☐ Electronic Signs

☐ Cameras

☒ Winter Driving

☐ Trucker Reports

☐ US 83 Oversize Loads

☐ Weather Stations

☐ Weather Stations w/ Alert

☐ Rest Areas

☐ Weigh Stations

☐ Other States' Info

☐ Reference Points

☐ Commercial Vehicles

[Set Default Map View](#)

Map data ©2025 Google, INEGI

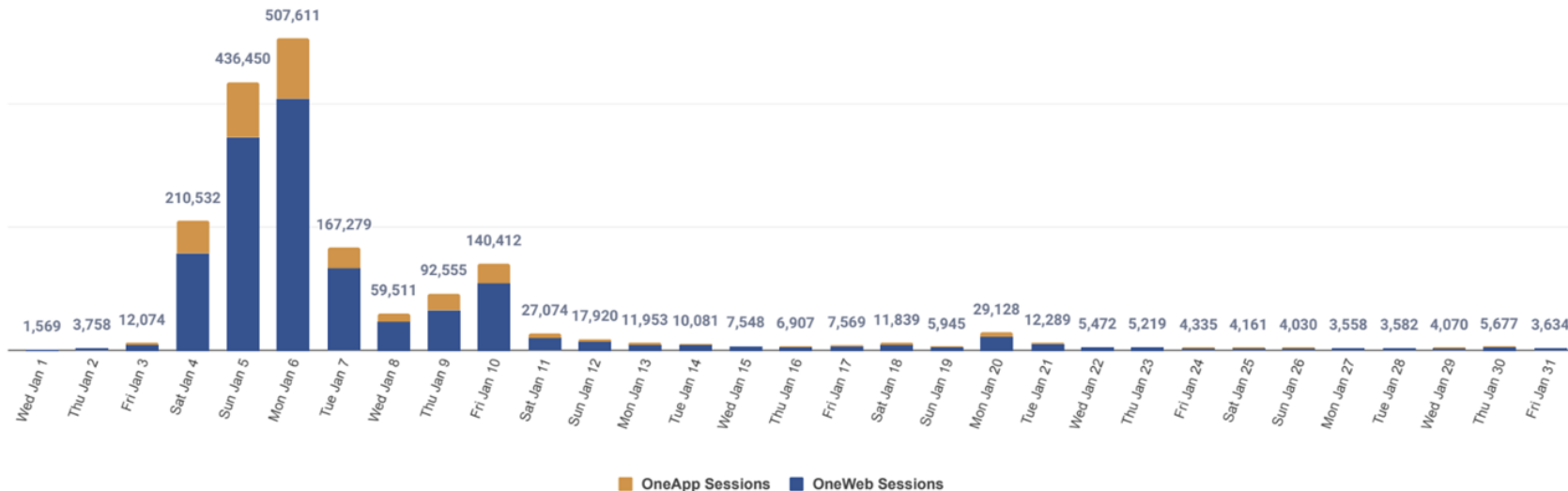
Usage Stats

KDOT Web & App Stats

Last Month's Daily Web & App Sessions (January 2025)

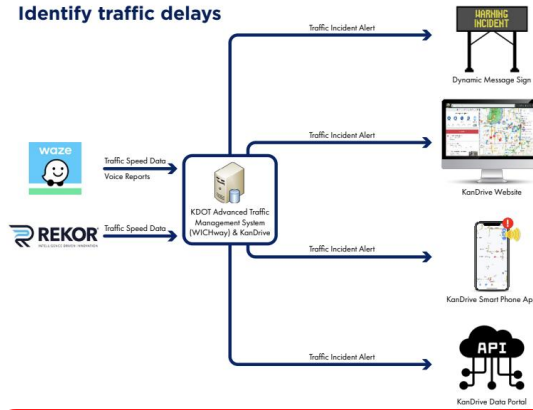
Last Month's Daily Web & App Sessions

Total Sessions (all sites) in gray



KanDrive and KalTS Software Enhancements

Identify traffic delays



Oversize Load Tracking



Enhanced KanDrive Interfaces



Work Zone Data Sharing Enhancements

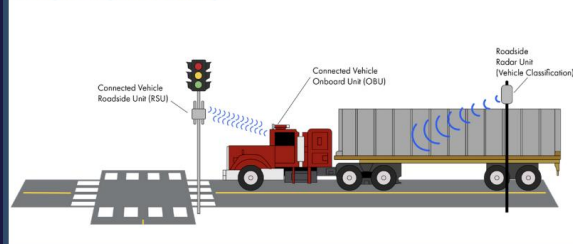


Public Incident Reporting



Hardware Deployment

Freight Signal Priority



Electronic Signs, Roadway Weather Information Systems and Cameras

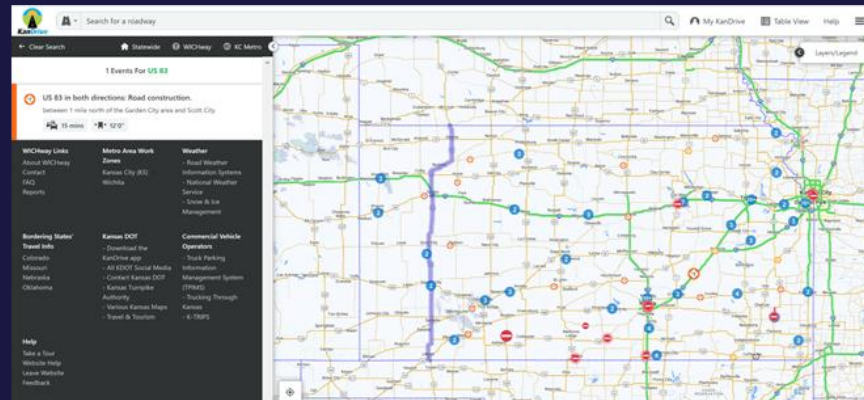


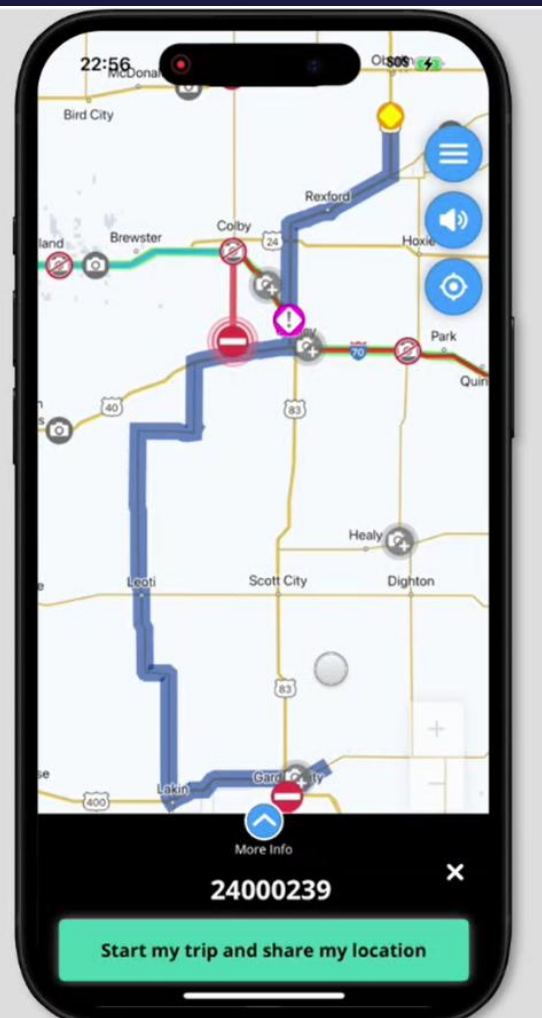
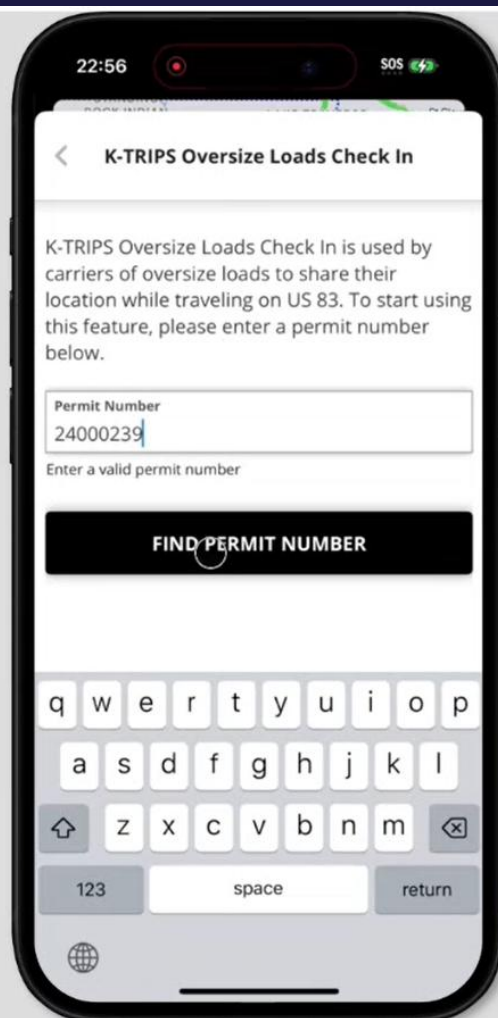
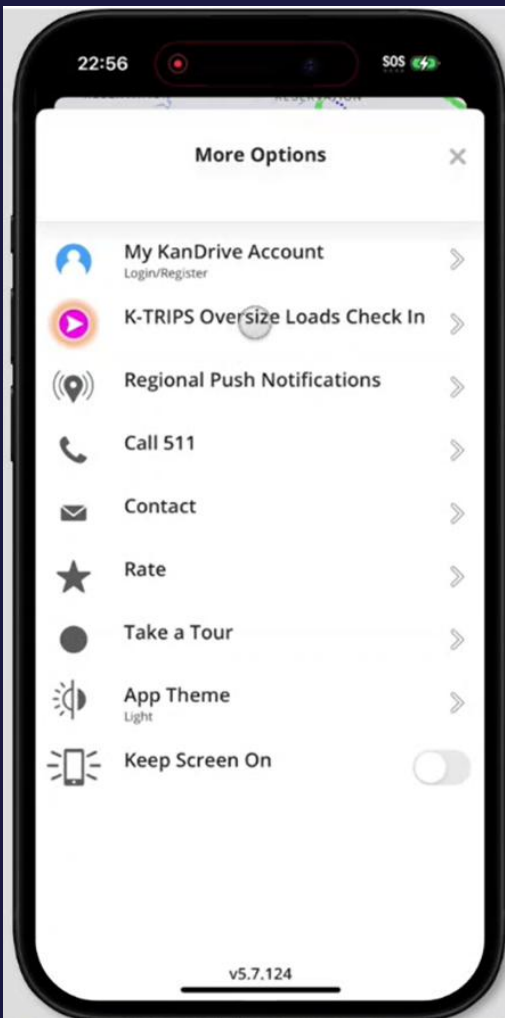
1.
OVERSIZE
LOAD
TRACKING

2.
PUBLIC
INCIDENT
REPORTING

3.
ENHANCED
KANDRIVE
INTERFACES

OVERSIZE LOAD TRACKING







Search for a place



My KanDrive



Table View

Clear Details

Statewide

WICHway

KC Metro



US 83: Oversize Load

Last updated Today at 7:35 AM CST

Traveling south on US 83 towards Garden City. Expect delays.



14' 2"

Vehicle Width



139' 6"

Vehicle Length



15' 2"

Vehicle Height



WICHway Links

About WICHway
Contact
FAQ
Reports

Metro Area Work Zones

Kansas City (KS)
Wichita

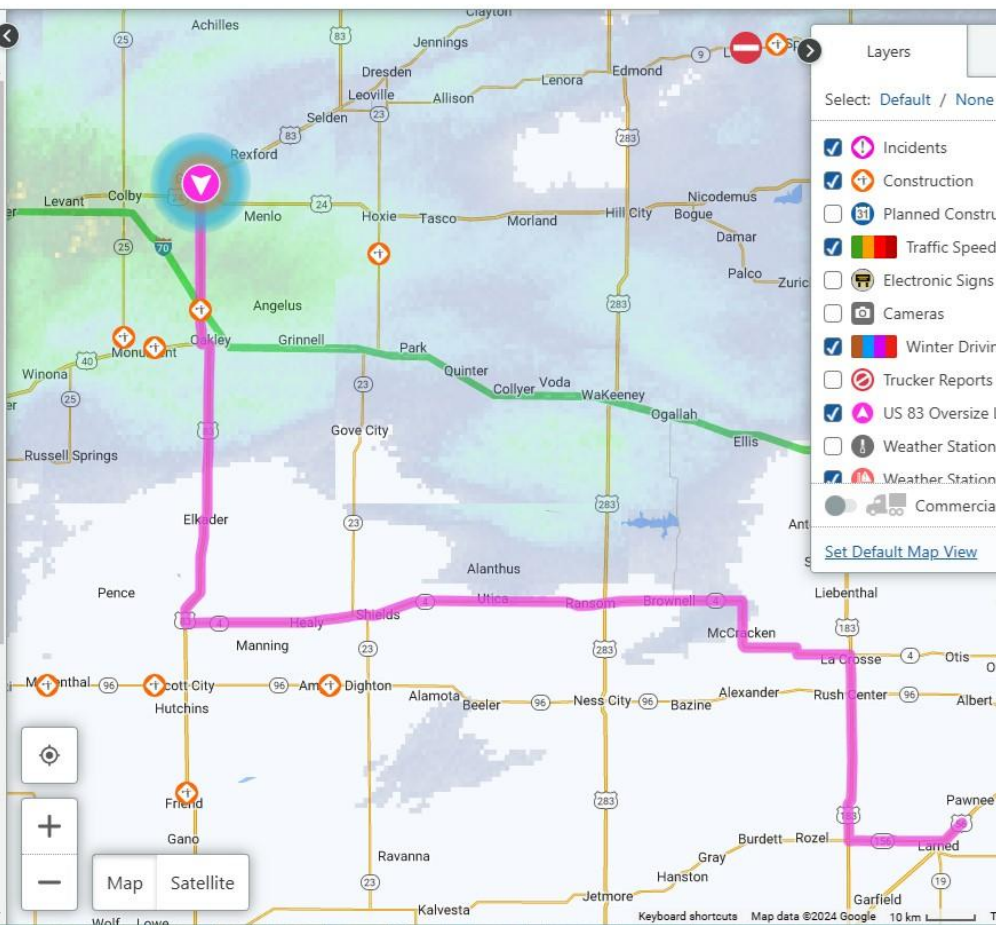
Weather

- Road Weather
Information Systems
- National Weather
Service
- Snow & Ice
Management

Bordering States*

Kansas DOT

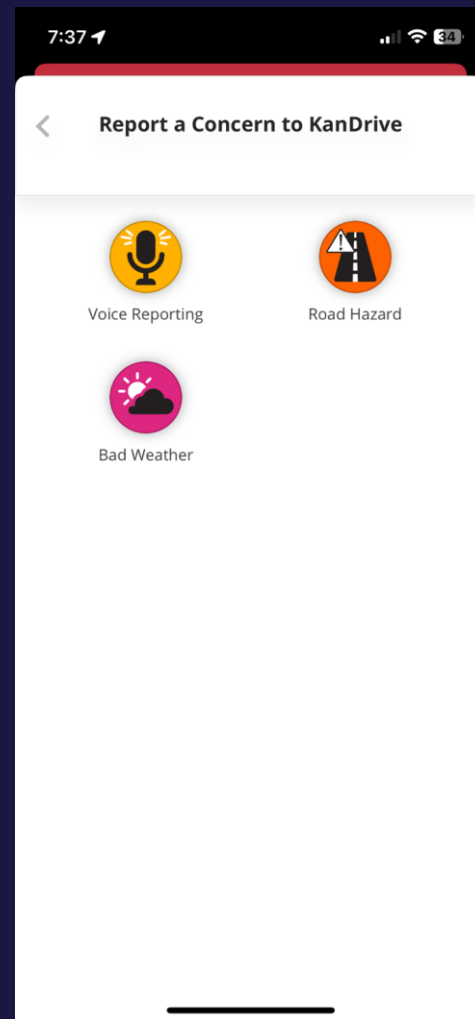
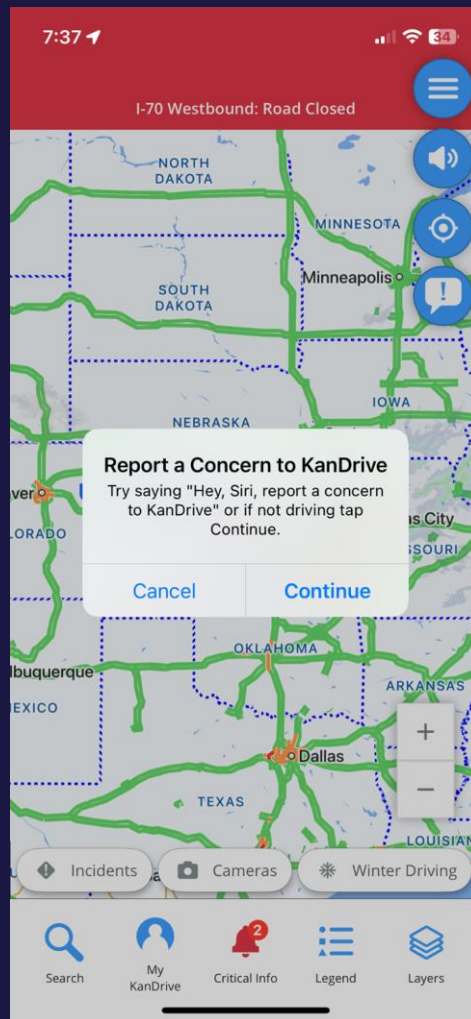
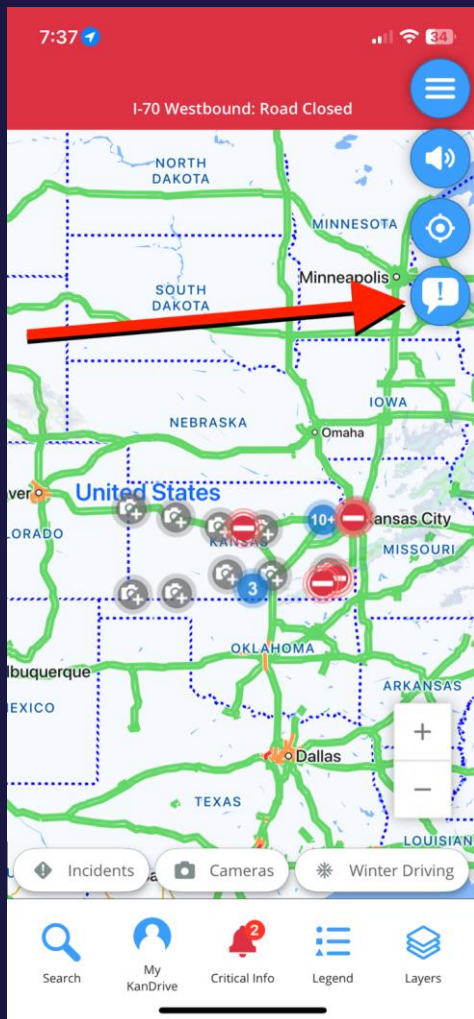
Commercial Vehicle

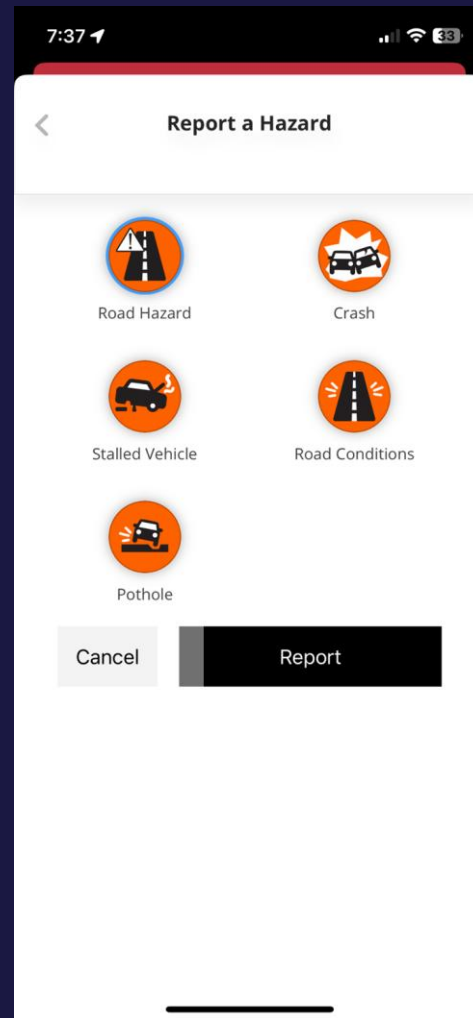
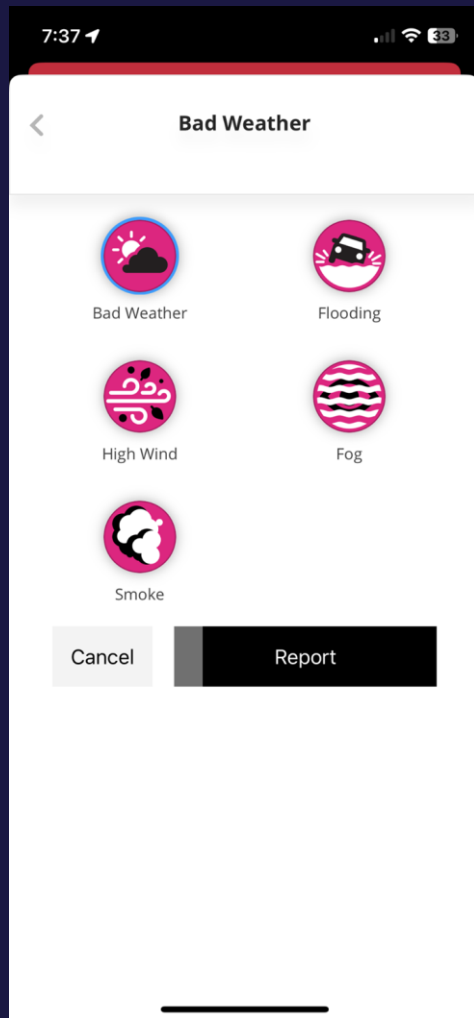


Lessons Learned

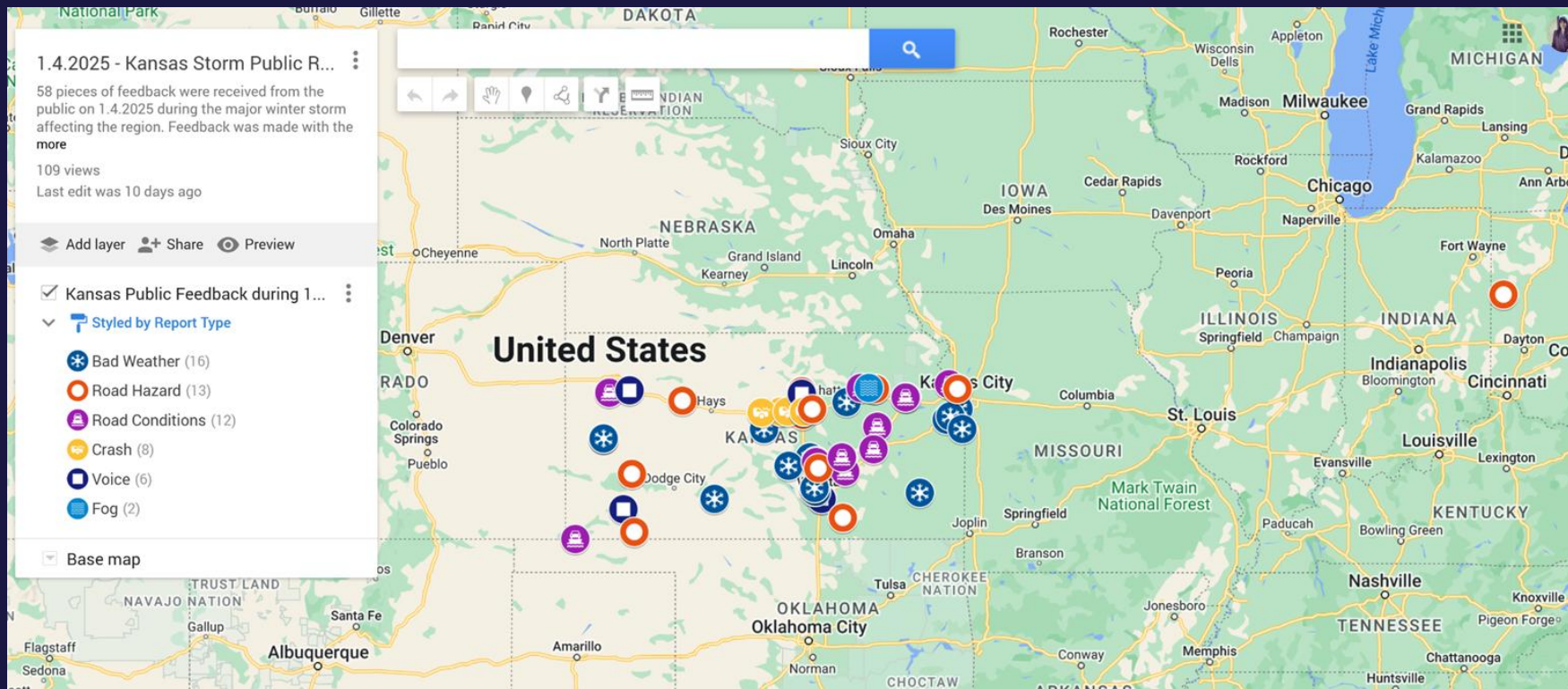
- Pre-launch concerns
- Communication and outreach
- Clarity about data usage
- Integration with Permits API
- Permit complexity
- Ongoing interest

PUBLIC INCIDENT REPORTING

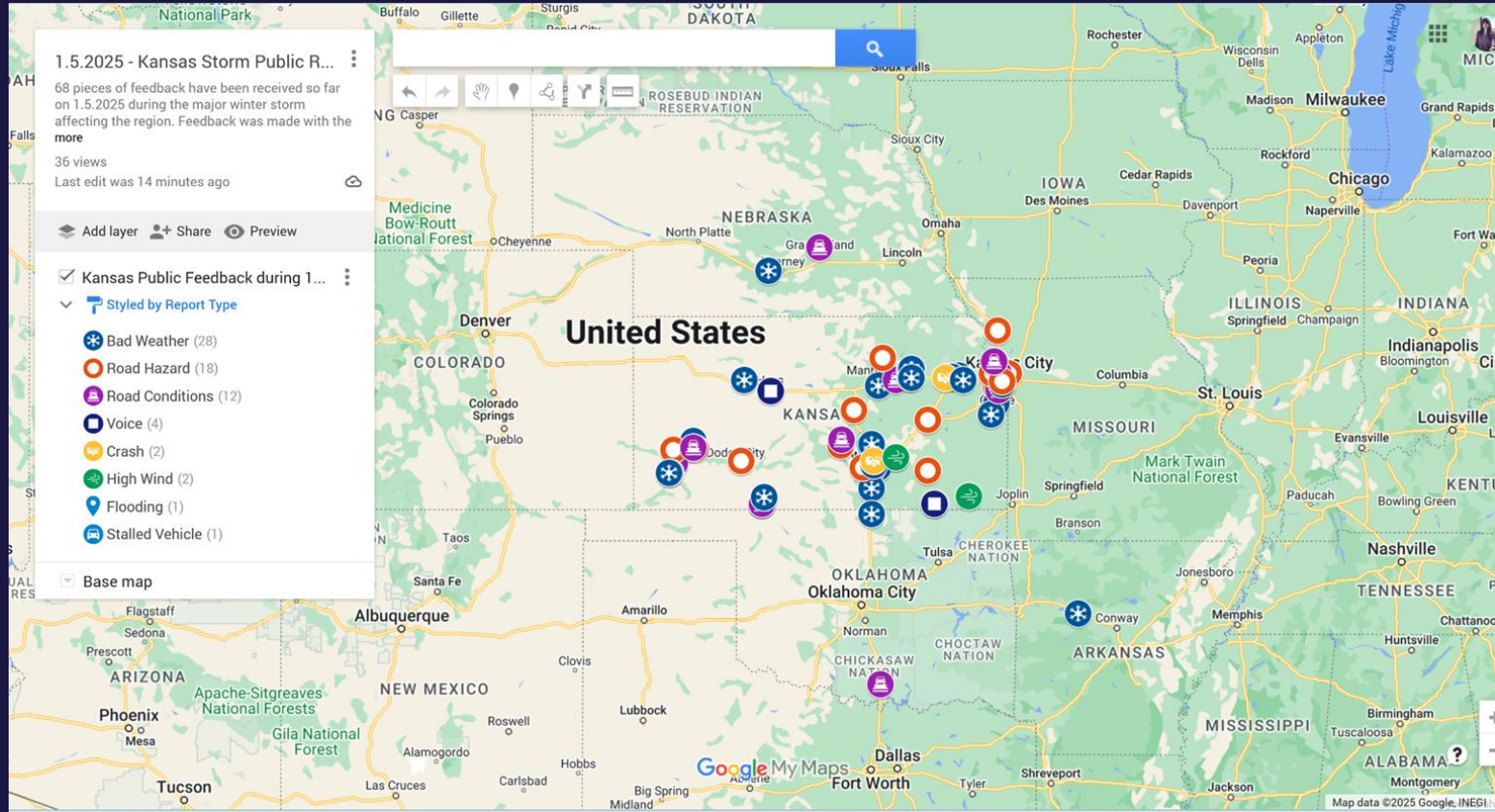




58 public reports on Jan 4



68 public reports on Jan 5



Lessons Learned

- Trade-offs

Hands-free easy UI  – Accidental Reports 

- Locations & areas of responsibility (KDOT roads)
- Comparison w/ Waze reports
- Actionability of reports

ENHANCED KANDRIVE INTERFACES



Source: MOTORTREND, June 6, 2023



Source: Top Gear, January 19, 2023



1:16



Crash ahead

on I-70 • 1.4mi

1:16



DETOUR

Marked detour ahead. Follow the posted signs

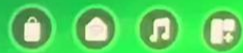
on I-70 • 1.0mi







11:19 ☁ 51°



Shopping List

There is 1 item on your
shopping list

Show my shopping list

Try "Alexa, what is on my shopping list"

Lessons Learned

- Newer platforms, less standardization, less support
- Stricter development environments
- Differences in CarPlay & Android Auto
- Alexa – yet another dev environment
- Promotion of new features
- Open data was key to success

Homework!





Thank you!

Chuck Miller, Ph.D., P.E., PTOE

HNTB

cmiller@hntb.com

816-527-2696

Kristin Virshbo, CEO

Castle Rock Associates

kristin.virshbo@castlerockits.com

503-734-6493